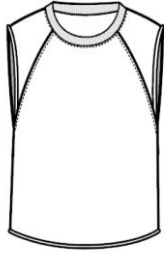


# American Apparel®



**HVT3370W NEW!**

**Women's Heavy Terry Dance Top**



## DETAILS

|                   |  |
|-------------------|--|
| <b>Weight</b>     | 498.0 G/SqM  |
| <b>Content</b>    | 71% Cotton, 29% Polyester  |
| <b>Features</b>   | 1.91 cm single needle topstitched collar<br>Cropped body<br>Raglan sleeveless construction<br>Raw finish at armholes and bottom hem<br>Side seam<br>Double-satin razor label |
| <b>Sizes</b>      | XS/S-M/L   |
| <b>Case Packs</b> | XS/S-M/L 4 DOZEN   |
| <b>Colours</b>    | 2  |
| <b>SKU's</b>      | 4  |

## SPECIFICATIONS

| Centimeters                | Tol-  | Tol+  | XS/S   | M/L    |
|----------------------------|-------|-------|--------|--------|
| <b>Chest (A)</b>           | 0.635 | 0.635 | 53.340 | 58.420 |
| <b>Length from HPS (B)</b> | 0.953 | 0.953 | 45.720 | 48.260 |
| Inches                     | Tol-  | Tol+  | XS/S   | M/L    |
| <b>Chest (A)</b>           | 0.250 | 0.250 | 21.000 | 23.000 |
| <b>Length from HPS (B)</b> | 0.375 | 0.375 | 18.000 | 19.000 |

## XS/S-M/L

| COLOURS | Code | Comments |
|---------|------|----------|
| White   | Z00  |          |
| Zinc    | 870  |          |

## CHANGES

|                         |             |
|-------------------------|-------------|
| <b>Additions</b>        |             |
| XS/S, M/L               | White, Zinc |
| <b>Total Net Change</b> | 4 SKU's     |