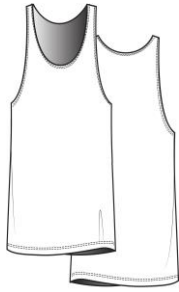


# American Apparel®



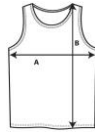
**PL408W**

**Unisex Sublimation Tank**



**DETAILS**

<b>Weight</b>	153.0 G/SqM
<b>Content</b>	100% Polyester
<b>Yarn Count</b>	30/1
<b>Features</b>	1.91 cm double-needle armholes and neckline hem 2.54 cm double-needle bottom hem Side seam Double-satin razor label
<b>Sizes</b>	XS-XL
<b>Case Packs</b>	XS-XL 3 DOZEN
<b>Colours</b>	1
<b>SKU's</b>	5



**SPECIFICATIONS**

Centimeters	Tol-	Tol+	XS	S	M	L	XL
<b>Chest (A)</b>	1.270	1.270	44.450	48.260	52.070	55.880	59.690
<b>Length from HPS (B)</b>	1.905	1.905	71.755	74.295	76.835	79.375	81.915
Inches	Tol-	Tol+	XS	S	M	L	XL
<b>Chest (A)</b>	0.500	0.500	17.500	19.000	20.500	22.000	23.500
<b>Length from HPS (B)</b>	0.750	0.750	28.250	29.250	30.250	31.250	32.250

**XS-XL**

<b>COLOURS</b>	Code	Comments
White	Z00	

**CHANGES**

Total Net Change 0 SKU's