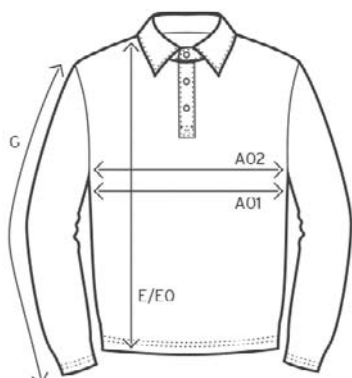


# 2049

## Men's Polo Sweater







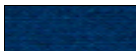


### measurement table (cm)

	S	M	L	XL	XXL	XXXL
A01	53	56	59	62	65	68
E	70	73	75	77	80	83
G	59	61	62,5	64	65,5	66,5

- A01 1/2 CHEST
- E BODY LENGTH
- G SLEEVE LENGTH

### colours

				
00/white 11-0601 TPX /TCX	9D/black 19-4205 TPX/TCX	XG/ash 13-4105 TPX/TCX	03/sports grey 17-0000 TPX/TCX	36/fire red 19-1663 TPX/TCX
				
VB/royal 19-4056 TPX/TCX	54/navy 19-4025 TPX/TCX			

### product

2049  
Men's Polo Sweater

### material

100 % cotton

### weight

320 g/m<sup>2</sup>

### sizes

S-XXXL

### care instructions



### packaging units

Unit = 1 piece.  
Carton = 20 pieces.

Sizes and weights + /- 5%. Subject to amendment.



CORPORATE FASHION SINCE 1989

2049

## Men's Polo Sweater

**product description**

Sweatshirt, polo-neck, button panel with 3 tone-in-tone buttons, elastane sleeve cuffs and waistband, molton brushed, 100 % cotton, 320 g/m<sup>2</sup>, S-XXXL.

**short description**

Sweatshirt, button panel with 3 tone-in-tone buttons, polo neck, molton brushed

**cut**

- comfortable cut

**workmanship**

- 3 thread molton
- molton brushed
- set-in-sleeves
- elastane sleeve cuffs and waistband
- shoulder seams with stay tape
- double seams

**properties**

- washable up to 60° C
- combed cotton
- excellent thermophysiological properties
- smooth surface
- high durability

Sizes and weights + /- 5%. Subject to amendment.

