

Herren Hemd

San Buono Man

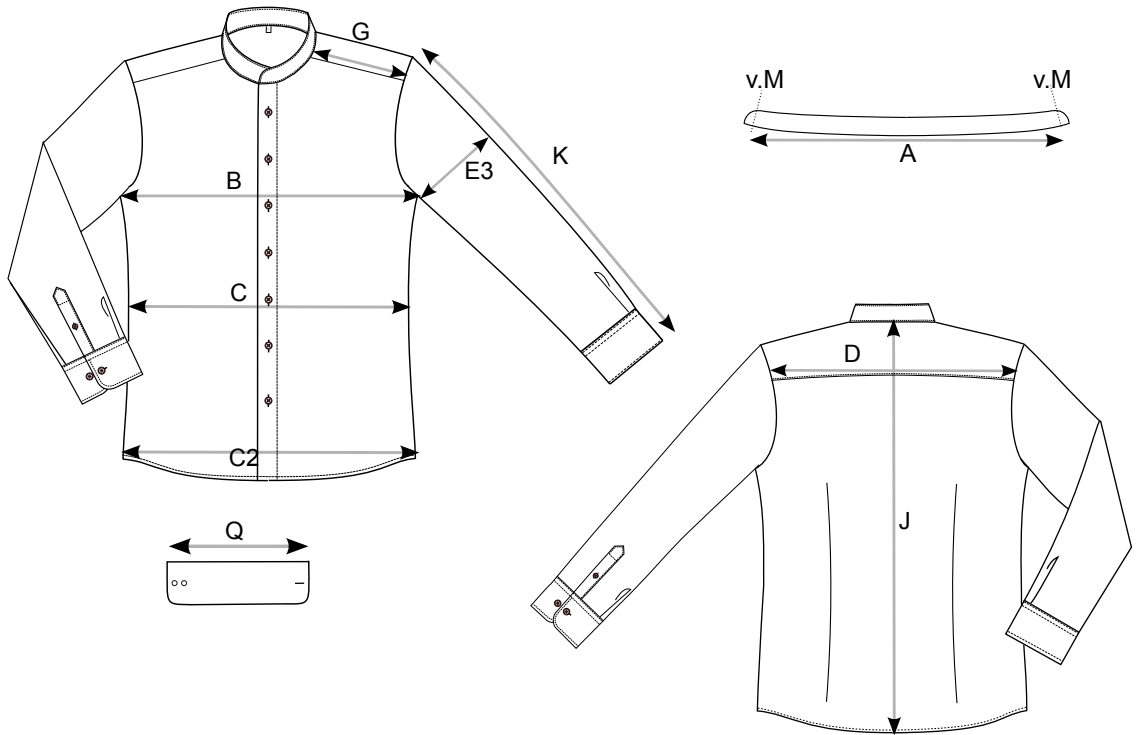
00540

Artikel/article

Name/name

Art.-Nr./article-No

Fertigmaße/Measurements - alle Angaben in cm



Bezeichnung	S	M	L	XL	XXL	3XL	4XL	5XL
Kragenweite collar size	42,0	44,0	46,0	48,0	50,0	52,0	54,0	56,0
Oberweite chest	106,0	112,0	118,0	122,0	128,0	134,0	142,0	150,0
Tailenweite waist	96,0	100,0	106,0	114,0	120,0	126,0	134,0	142,0
Saumweite Seam Width	102,0	108,0	114,0	118,0	124,0	130,0	138,0	146,0
Rückenbreite back width	42,0	44,0	46,0	48,0	50,0	52,0	54,5	57,0
Schulterbreite Shoulder width	13,0	14,0	15,0	16,0	17,0	18,0	19,0	20,0
Rumpflänge body length	74,0	76,0	77,0	80,0	81,0	82,0	85,0	86,0
Ärmellänge Sleeve length	66,5	67,5	67,5	68,5	68,5	68,5	68,5	68,5
Oberarmweite Biceps	39,0	41,0	43,0	45,0	47,0	49,0	51,5	54,0
Manschette offen open cuff	26,5	26,5	27,5	28,5	28,5	29,5	29,5	30,5

02.10.2019