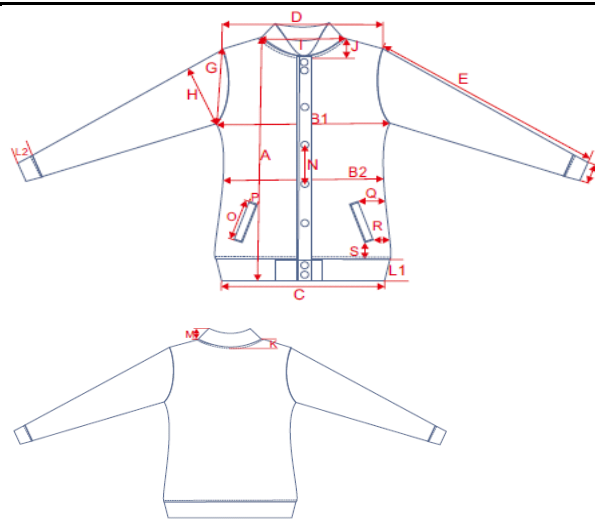


BY027\_Ladies 2-Tone Sweat College Jacket

Description		XS	S	M	L	XL	
A	Length	cm	55	57	59	61	63
B1	1/2 Chest Width	cm	45,5	48	50,5	53	55,5
B2	1/2 Waist Width	cm	40,5	43	45,5	48	50,5
C	1/2 Hem Width	cm	34,5	37	39,5	42	44,5
D	1/2 Shoulder Width	cm	37,5	40	42,5	45	47,5
E	Sleeve Length	cm	60	61	62	63	64
F	1/2 Cuff Width	cm	8	8,5	9	10	11
G	1/2 Armhole Straight (seam to seam)	cm	19	20	21	22	23
H	1/2 Upper Arm Width	cm	17	18	19	20	21
I	Neckhole (seam to seam)	cm	17,5	18	19	20	21
J	Front Neckdrop (HPS to seam)	cm	7,5	8	8,5	9	9,5
K	Back Neckdrop (HPS to seam)	cm	1,5	1,5	2	2	2
L1	Hem Cuff Height	cm	7	7	7	7	7
L2	Sleeve Cuff Height	cm	7	7	7	7	7
M	Neckcuff Height (Collar)	cm	4,5	4,5	4,5	4,5	4,5
N	Distance of Buttons	cm			8,5		
O	Pocket Length (Opening)	cm	12	13	13	14	14
P	Pocket Width (Flap)	cm	2	2	2	2	2
Q	Distance Pocket from Sideseam (Pocket Top)	cm	7,5	8	8,5	9	9,5
R	Distance Pocket from Sideseam (Pocket Bottom)	cm	3,5	4	4,5	5	5,5
S	Distance Pocket from Hem-Seam	cm	3,5	4	4,5	5	5,5



Article Description	Inside brushed sweat fabric - neutral sizelabel without branding, neckprint possible - two pockets on the front - set-in sleeves - striped rib cuffs at the collar, hem and sleeve openings - neck halfmoon - neck tape - metal press-buttons in contrast
Fabric	70% cotton/30% polyester; grey: 90% cotton/ 10% viscose; charcoal: 60% cotton/ 40% polyester, brushed Fleece, ca. 320 g/m <sup>2</sup>
Colors	Black/White, Black/Heather Grey, <a href="#">Black/Red</a> , Heather Grey/White

