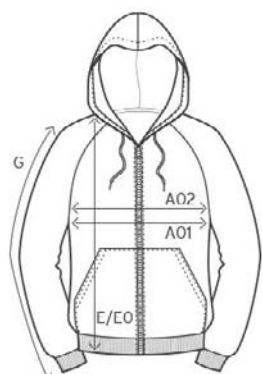


5080

## Men's Hoody Jacket



## measurement table (cm)

	S	M	L	XL	XXL	XXXL	4XL	5XL
A01	56	59	61	63	66	69	79	89
E	67	69	71	73	75	77	83	90
G	54	56	58	61	63	66	69	72

A01 1/2 CHEST

E BODY LENGTH

G SLEEVE LENGTH

## colours



00/white

11-0601 TPX /TCX



9D/black

19-4205 TPX/TCX



9D/black

19-4205 TPX/TCX



XG/ash

13-4105 TPX/TCX



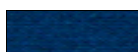
WG/light grey

18-4510 TCX



36/fire red

19-1663 TPX/TCX



54/navy

19-4025 TPX/TCX

## product

5080

Men's Hoody Jacket

## material

100 % cotton

## weight

320 g/m<sup>2</sup>

## sizes

S-5XL

## care instructions



## packaging units

Unit = 1 piece.

Carton = 20 pieces.

Sizes and weights + /- 5%. Subject to amendment.



CORPORATE FASHION SINCE 1989

5080

## Men's Hoody Jacket

**product description**

Sweat jacket, full-length and concealed zip, double hood with lining, pouch pocket, elastane sleeve cuffs and waistband, molton brushed, 100 % cotton, 320 g/m<sup>2</sup>, S-XXXL.  
Colour black in sizes S-5XL.

**short description**

Sweat jacket, double hood, full-length and concealed zip, pouch pocket, molton brushed

**cut**

- comfortable cut

**workmanship**

- 3 thread molton
- molton brushed
- set-in-sleeves
- elastane sleeve cuffs and waistband
- shoulder seams with stay tape
- double seams
- metal zipper (nickelfree)

**properties**

- washable up to 60° C
- combed cotton
- excellent thermophysiological properties
- smooth surface

Sizes and weights + /- 5%. Subject to amendment.



CORPORATE FASHION SINCE 1989