

ANVIL®



362

Adult Featherweight V-Neck Tee

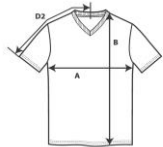


DETAILS

Weight
Content
Yarn Count
Features

110.0 G/SqM
100% Ring Spun Cotton
40/1
High stitch density for smoother printing surface
Semi-fitted
Side seam construction
Shoulder-to-shoulder tape and 1.5 cm seamed mitered v-neck collar
Single-needle topstitched front neck
Twin needle sleeve and bottom hem
TearAway label
Oeko-Tex® Standard 100 Certified
S-2XL
S - XL 72 PIECES
2XL 36 PIECES
8
40

Sizes
Case Packs
Colours
SKU's



2)

Chest (A)
Length from HPS (B)
Sleeve length (centre back) (D2)

	Tol-	Tol+	S	M	L	XL	2XL
	2.000	2.000	46.000	49.000	52.000	55.000	58.000
	1.500	1.500	71.000	74.000	76.000	79.000	81.000
	2.000	2.000	40.000	42.500	44.500	46.500	48.500
	Tol-	Tol+	S	M	L	XL	2XL
	0.787	0.787	18.110	19.291	20.472	21.654	22.835
	0.591	0.591	27.953	29.134	29.921	31.102	31.890
	0.787	0.787	15.748	16.732	17.520	18.307	19.094

S-2XL

COLOURS

Black
Caribbean Blue
Heather Dark Grey
Heather Green
Navy
Red
Silver
White

Code	Comments
036	
308	
334	65% Polyester, 35% Ring Spun Cotton
322	65% Polyester, 35% Ring Spun Cotton
032	
338	
333	
030	

CHANGES

Total Net Change 0 SKU's