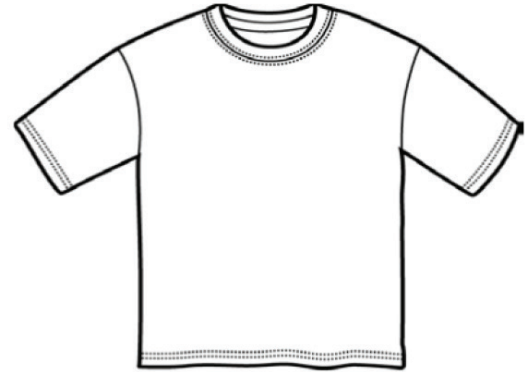


# 200BE - BULLSEYE TSHIRT - SIZING GUIDES

## DETAILS

<b>Weight</b>	5.3 oz per sq yard
<b>Content</b>	100% cotton
<b>Features</b>	Double-needle stitched neckline and bottom hem Shoulder to shoulder taping Pad printed label
<b>Sizes</b>	S-3XL; YS-YL
<b>Case Packs</b>	S-XXL - 72 pieces 3XL - 36 pieces Youth - 72 pieces



## SPECIFICATIONS

Size	Width (A)	Length (B)	CB Sleeve ( C)
Small	16.5	26.5	15.53
Medium	18.5	27.5	17
Large	20.5	28.5	18.5
X-large	22	29.5	20
2X-large	24	30	21.5
3X-large	26.5	31	22.88
Youth Sm	16	20	14.5
Youth M	17	22	15.5
Youth L	18	23.5	16.5
Tol.	+/- 1.5	+/- 1.5	+/- 0.75

