

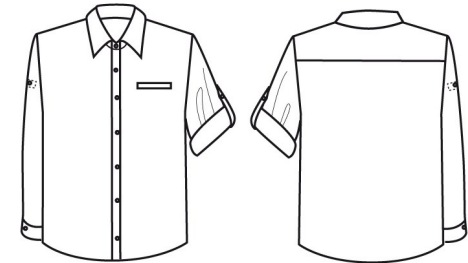
PR206

MEN'S ROLL SLEEVE POPLIN SHIRT

CARTON	PACK	NO. SKU'S
36	6	5



Colour	Pantone	C	M	Y	K
Black	0	0	0	0	100



Fabric

65% Polyester, 35% Cotton, plain Poplin weave, 105gsm

Colours

Black

Sizes

S, M, L, XL, 2XL

Features

- Men's roll sleeve poplin shirt
- Roll up sleeve with button tab fastening
- Allowing sleeves to be neatly rolled up
- Left breast vented jet pocket
- Allows embroidery above and below pocket
- Soft collar styling
- Two button fastening for adjustable cuff

Country of Origin

Bangladesh

Carton Dimensions

36 cm x 57cm x 57 cm

Carton Weight

8.35 kg approx.

VAT Code

6205 30 0000

Call size	S	M	L	XL	2XL
Collar cm	37	39.5	42	44.5	47
Chest to fit "	34	38	42	46	50
Chest to fit cm	86.5	96.5	106.5	116.5	126.5
Chest actual cm	107	117	127	137	147
DE,NL	36	38-40	42	44-46	48
FR,ES,PT	36	38	40	42	44

Marketing Description

This shirt is very popular with bartenders who need to have their sleeves rolled up and fastened securely in place, ready to serve drinks. Initially a long sleeve shirt, the sleeve can be rolled up and fastened with a tab and button on the upper arm.



WASH DARK COLOURS SEPARATELY, WASH INSIDE OUT, DO NOT SOAK, DO NOT DRY CLEAN