

**ANVIL®**



**939**



**Adult Midweight Camouflage Tee**

**DETAILS**

**Weight**  
**Content**  
**Yarn Count**  
**Features**

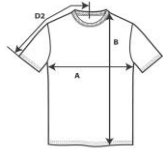
170.0 G/SqM  
100% Ring Spun Cotton  
26/1  
Classic fit  
Side seam construction  
Shoulder-to-shoulder tape and seamed collar  
Twin-needle neck, sleeve and bottom hem  
TearAway label  
Oeko-Tex® Standard 100 Certified

**Sizes**  
**Case Packs**

S-2XL  
S - XL 72 PIECES  
2XL 36 PIECES

**Colours**  
**SKU's**

2  
10



)2)

**Chest (A)**  
**Length from HPS (B)**  
**Sleeve length (centre back) (D2)**

	<b>Tol-</b>	<b>Tol+</b>	<b>S</b>	<b>M</b>	<b>L</b>	<b>XL</b>	<b>2XL</b>
	1.905	1.905	45.720	50.800	55.880	60.960	66.040
	2.540	2.540	71.120	73.660	76.200	78.740	81.280
	1.905	1.905	39.688	43.180	46.990	50.800	54.610
	<b>Tol-</b>	<b>Tol+</b>	<b>S</b>	<b>M</b>	<b>L</b>	<b>XL</b>	<b>2XL</b>
	0.750	0.750	18.000	20.000	22.000	24.000	26.000
	1.000	1.000	28.000	29.000	30.000	31.000	32.000
	0.750	0.750	15.625	17.000	18.500	20.000	21.500

**S-2XL**

**COLOURS**  
Camouflage Green  
Camouflage Sand

Code  
306  
324

**CHANGES**

Total Net Change 0 SKU's