

**ANVIL®**



**6740 NEW!**

**Adult Tri-Blend Long Sleeve Tee**

**DETAILS**

**Weight**

**Content**

**Yarn Count**

**Features**

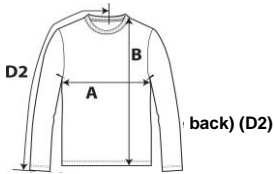
159.0 G/SqM  
 50% Polyester, 25% Combed Ring Spun Cotton, 25% Viscose  
 32/1  
 High stitch density for smoother printing surface  
 Wicking properties  
 Side seam construction  
 Shoulder-to-shoulder tape and seamed collar  
 Twin-needle bottom hem  
 TearAway label  
 Oeko-Tex® Standard 100 Certified  
 S-2XL  
 S-2XL 36 PIECES  
 5  
 25

**Sizes**

**Case Packs**

**Colours**

**SKU's**



**Chest (A)**  
**Length from HPS (B)**  
**Sleeve length (centre back) (D2)**

	<b>Tol-</b>	<b>Tol+</b>	<b>S</b>	<b>M</b>	<b>L</b>	<b>XL</b>	<b>2XL</b>
	1.905	1.905	45.720	50.800	55.880	60.960	66.040
	2.540	2.540	68.580	71.120	73.660	76.200	78.740
	2.540	2.540	82.550	87.630	91.440	95.250	98.425
	<b>Tol-</b>	<b>Tol+</b>	<b>S</b>	<b>M</b>	<b>L</b>	<b>XL</b>	<b>2XL</b>
	0.750	0.750	18.000	20.000	22.000	24.000	26.000
	1.000	1.000	27.000	28.000	29.000	30.000	31.000
	1.000	1.000	32.500	34.500	36.000	37.500	38.750

**S-2XL**

**COLOURS**

Black

Heather Graphite

Heather Grey

Heather Navy

White

Code

036

780

346

170

030

**CHANGES**

Additions

S, M, L, XL, 2XL

Total Net Change 25 SKU's

Black, Heather Graphite, Heather Grey, Heather Navy, White