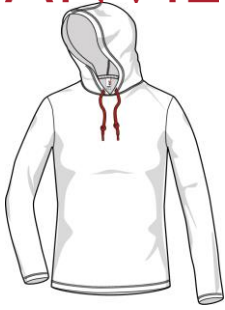


ANVIL®



887L

Women's Lightweight Long Sleeve Hooded Tee



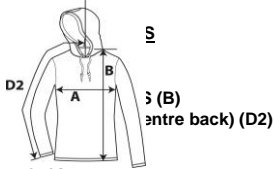
DETAILS

Weight
Content
Yarn Count
Features

146.0 G/SqM
100% Combed Ring Spun Cotton
32/1
High stitch density for smoother printing surface
Semi-fitted contoured silhouette with side seam and display tape
Relaxed unlined hood with contrast drawcord
Three-needle neck, sleeve and bottom hem
TearAway label
Oeko-Tex® Standard 100 Certified

Sizes
Case Packs
Colours
SKU's

S-2XL
S - 2XL 36 PIECES
9
45



Chest (A)
Length from HPS (B)
Sleeve length (centre back) (D2)

Tol-	Tol+	S	M	L	XL	2XL
1.905	1.905	43.815	48.895	53.975	59.055	64.135
2.540	2.540	64.770	66.040	68.580	71.120	72.390
2.540	2.540	78.740	80.645	81.915	83.820	85.725

Tol-	Tol+	S	M	L	XL	2XL
0.750	0.750	17.250	19.250	21.250	23.250	25.250
1.000	1.000	25.500	26.000	27.000	28.000	28.500
1.000	1.000	31.000	31.750	32.250	33.000	33.750

S-2XL

COLOURS
Black / Dark Grey
Caribbean Blue / Dark Grey
Heather Blue / Neon Yellow
Heather Dark Grey / Dark Grey
Heather Green / Neon Yellow
Heather Purple / Neon Yellow
Navy / Dark Grey
Red / Dark Grey
White / Dark Grey

Code	Comments
036	
308	
321	35% Ring Spun Cotton, 65% Polyester
334	35% Ring Spun Cotton, 65% Polyester
322	35% Ring Spun Cotton, 65% Polyester
232	35% Ring Spun Cotton, 65% Polyester
032	
338	
030	

CHANGES

Deletions
S, M, L, XL, 2XL
Total Net Change 5 SKU's

Hot Pink