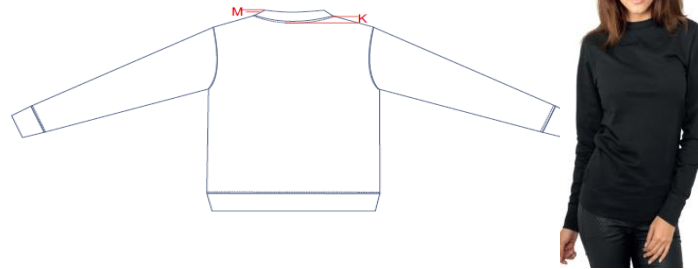
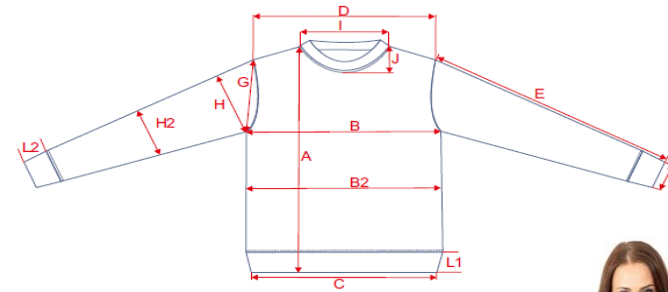


BY025\_Ladies Crewneck

Tolerances: +/- 2 cm

| Description |                              | XS | S  | M    | L  | XL   |    |
|-------------|------------------------------|----|----|------|----|------|----|
| A           | Length                       | cm | 66 | 68   | 70 | 72   | 74 |
| B           | 1/2 Chest Width              | cm | 46 | 48,5 | 51 | 53,5 | 56 |
| B2          | 1/2 Waist (20cm below chest) | cm | 42 | 44,5 | 47 | 49,5 | 52 |
| C           |                              | cm |    |      |    |      |    |
| D           |                              | cm |    |      |    |      |    |
| E           | Sleeve Length (top)          | cm | 64 | 65   | 66 | 67   | 68 |
|             |                              | cm |    |      |    |      |    |
| F           |                              | cm |    |      |    |      |    |
| G           |                              | cm |    |      |    |      |    |
| H           |                              | cm |    |      |    |      |    |
| H2          |                              | cm |    |      |    |      |    |
| I           |                              | cm |    |      |    |      |    |
| J           |                              | cm |    |      |    |      |    |
| K           |                              | cm |    |      |    |      |    |
| L1          |                              | cm |    |      |    |      |    |
| L2          |                              | cm |    |      |    |      |    |
| M           |                              | cm |    |      |    |      |    |
| N           |                              | cm |    |      |    |      |    |
| O           |                              | cm |    |      |    |      |    |
| P           |                              | cm |    |      |    |      |    |
| Q           |                              | cm |    |      |    |      |    |
| R           |                              | cm |    |      |    |      |    |
| S           |                              | cm |    |      |    |      |    |



|                            |  |
|----------------------------|--|
| <b>Article Description</b> | Combed cotton - neutral sizelabel without branding, neckprint possible - set-in sleeves - fashionable overlook seams at the hem and set-in - typical cross-stitching below the neck opening - neck tape - rib cuff at the hem, neck and sleeve opening - neck halfmoon - long cutted |
| <b>Fabric</b>              | 60% cotton/ 40% polyester, light fleece, 210 gsm   |
| <b>Colors</b>              | Black, Charcoal, Heather Grey  |