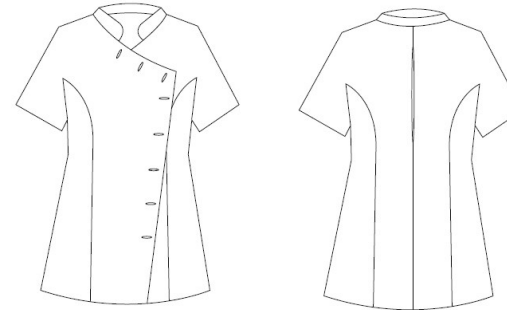


PR687**'LILY' BEAUTY AND SPA TUNIC**

CARTON	PACK	NO. SKU'S
12	3	80



Colour	Pantone	C	M	Y	K
Black	0	0	0	0	100
Hot Pink	214c	0	100	24	4
Purple	269	82	98	5	26
Lime	382	29	0	96	0
Turquoise	312	89	0	11	0
White	White	0	0	0	0

Fabric

100% Polyester plain weave , 185gsm

Colours

Black with Hot Pink, Black with Purple, Black with Turquoise, Black with White, Hot Pink with Black, Lime with Black, Purple with Black, Turquoise with Black

Sizes

6, 8, 10, 12, 14, 16, 18, 20, 22, 24

Features

- Beauty and Spa tunic with Mandarin collar
- Asymmetric button front fastening with eight 'bar' shaped buttons
- Contrast piping to edge
- Short sleeve
- Side vents
- Back pleat for ease of movement
- Princess seams
- Easycare

Country of Origin

China

Carton Dimensions

60cm x 44cm x 17cm

Carton Weight

6.20 kg approx.

VAT Code

6211 43 1000



WASH DARK COLOURS SEPARATELY

Size	6	8	10	12	14	16	18	20	22	24
Bust to fit "	31	33	35	37	39	41	43	45	47	49
Bust to fit cm	79	84	89	94	99	104	109	114	119	124
Call size	2XS	XS	S	M	L	XL	2XL	3XL	4XL	5XL
Bust actual cm	89	94	99	104	109	114	120	126	132	138
DE,NL	34	36	38	40	42	44	46	48	50	52
FR,ES,PT	34	36	38	40	42	44	46	48	50	52
IT	38	40	42	44	46	48	50	52	54	56

Marketing Description

The 'Lily' beauty tunic offers contrast piping along the Mandarin collar and down through the main body of the tunic. Eight 'bar' shaped buttons fasten this tunic in a wrap over style whilst the short sleeves, side vents and back pleats result in a garment that is comfortable to work in.